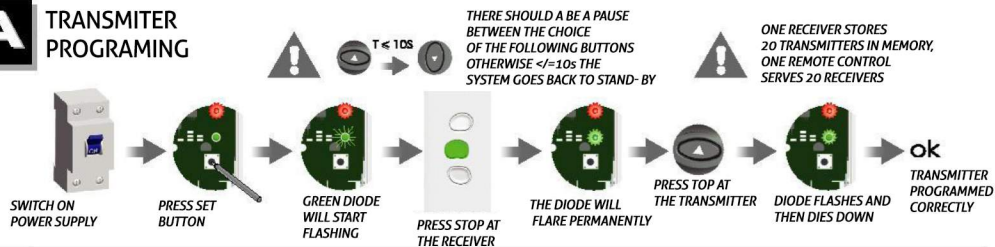
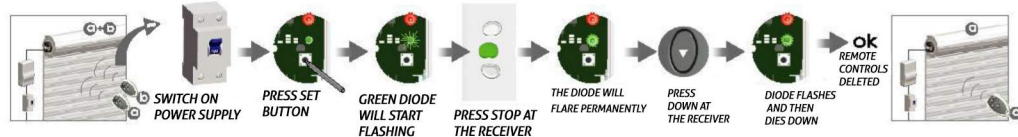


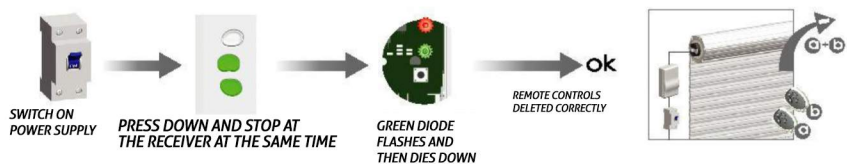
A TRANSMITTER PROGRAMING



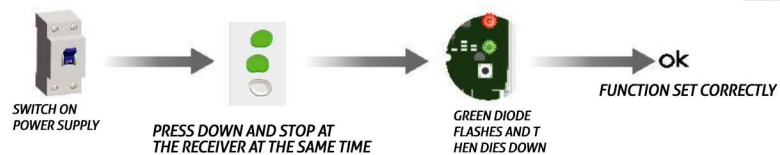
A DELETING ONE CHANNEL



A DELETING ALL REMOTE CONTROLS

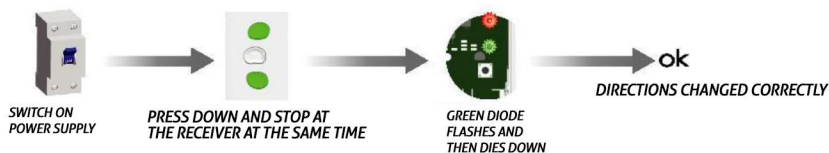


A SETTING OF IMPULSE FUNCTION

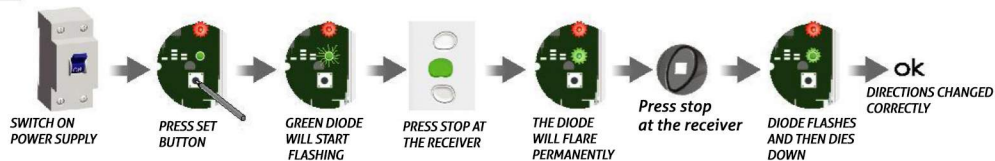


⚠️ Performing the operation once again will cancel the function

A CHANGE OF "A" DIRECTIONS



A CHANGE OF "B" DIRECTIONS



433MHz 868MHz CE FC ALL DEVICES WORK AT FREQUENCIES 433MHz OR 868MHz

SWITCHBOARD DC43



OMNI GATES WWW.OMNICORP.EU

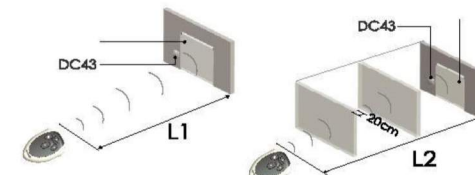
T SPECIFICATION



⚠️ Group channel is factory programmed, one cannot adjust its programmes

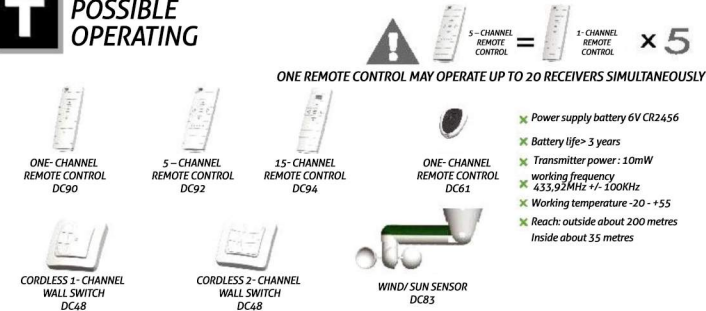
- ✦ Cordless receiver
- ✦ Electronic control
- ✦ Precise switch
- ✦ Impulse function
- ✦ Direction change function
- ✦ Max 20 transmitters
- ✦ Each subsequent saved code over 20 will be saved instead of the next remote control

RANGE

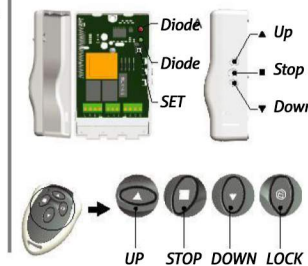


	L1 OUTSIDE	L2 INSIDE	WORKING FREQUENCY
230V/50Hz	200m	35m	433.92MHz
120V/60Hz	200m	35m	

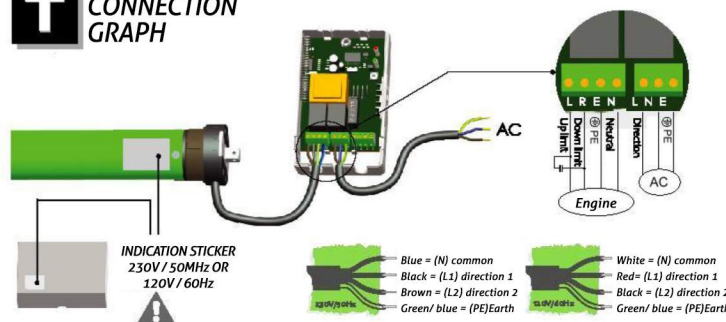
T POSSIBLE OPERATING



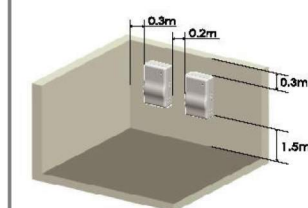
BUTTONS DESCRIPTIONS



T CONNECTION GRAPH



RECOMMENDED INSTALLATION



- The shortest possible distance from the ground $\geq 1.5m$
- The shortest possible distance from the ceiling $\geq 0.3m$
- The shortest possible distance from the receivers $\geq 0.2m$